

Speed-talk session III: People at the centre of restoration & sustainable landscape management

Dil Bahadur Khatri, Executive Director, South Asia Institute of Advanced Studies and Post-Doc Researcher Swedish University of Agricultural Sciences SLU: *Lessons from research-policy-practice lab methodology in the local water management sector in Himalayas*

#Focali2020

Lessons from research-policy-practice lab methodology in the local water management in the Himalayas

Dil Khatri

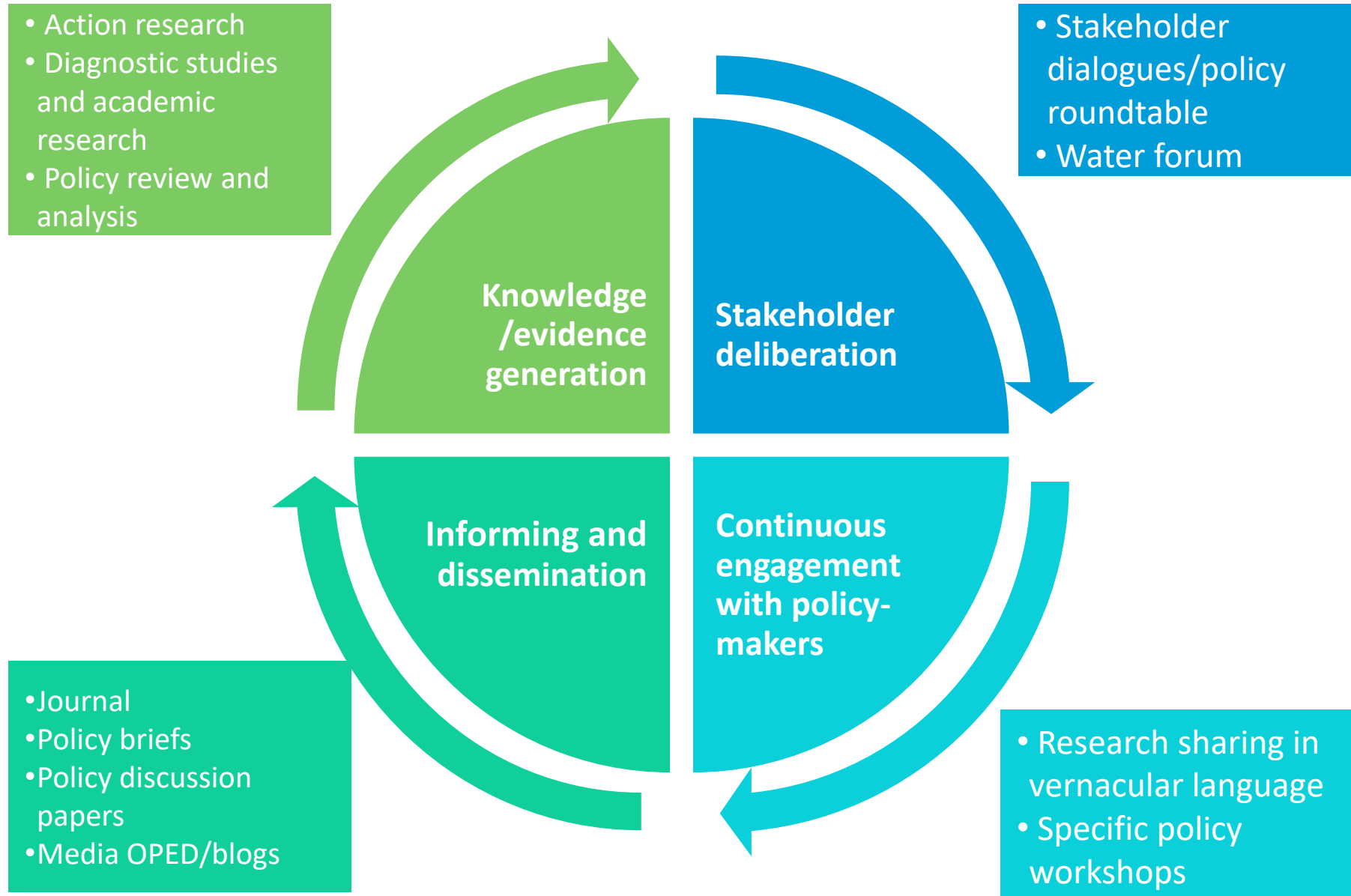


Southasia Institute of Advanced Studies (SIAS)

www.sias-southasia.org

4 November 2020

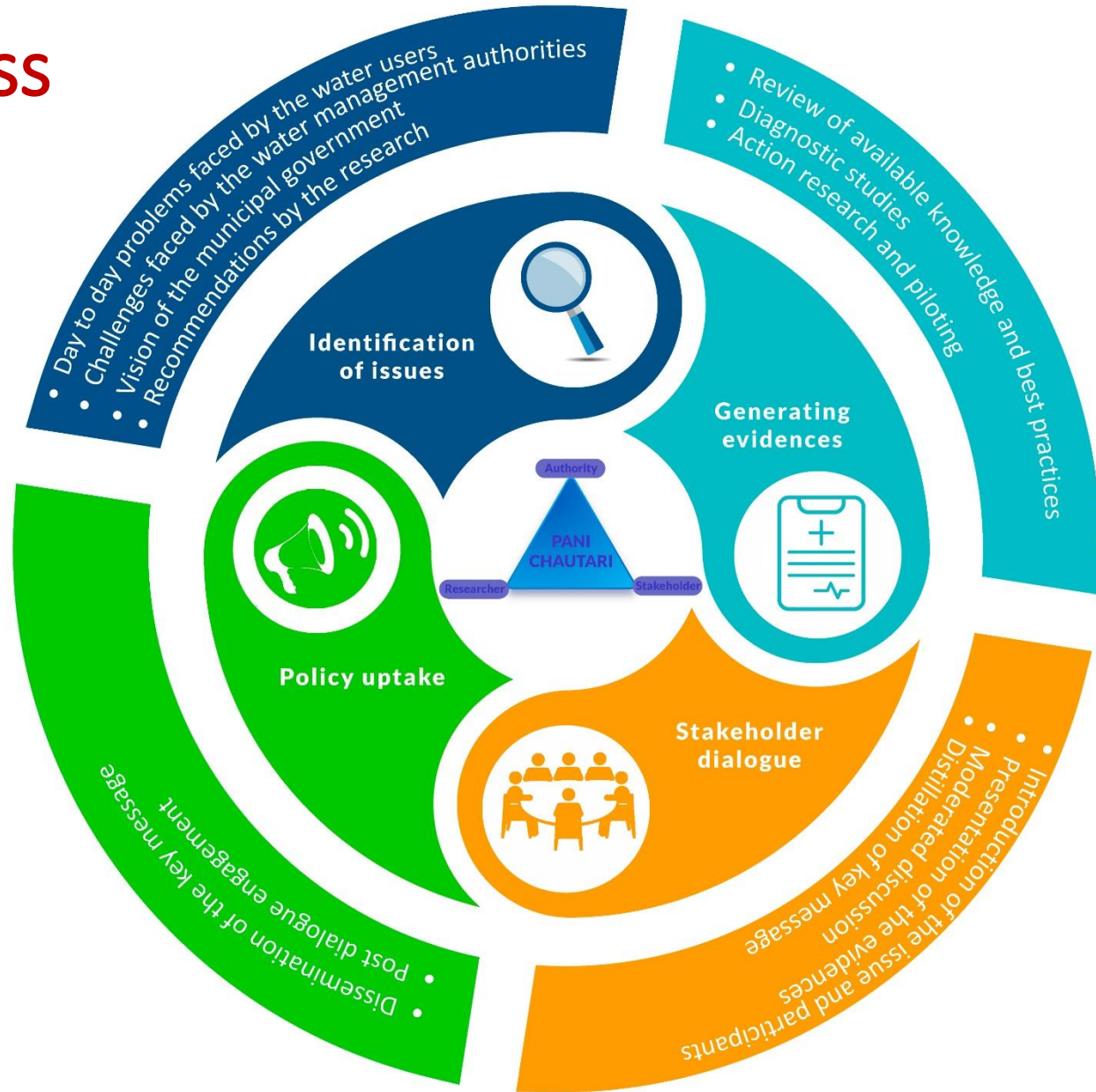
SIAS policy engagement strategies and tools



Local Water Forum (Pani Chautari)



Pani Chautari process



Some positive outcomes in policy and praxis

- Recognition of the role of evidence in municipal policymaking – Dhulikhel
- Out scaling of recharge ponds by Dhulikhel municipality
- Compulsory water recharge pit in Dharan



Key lessons and insights

- Continuous engagement with policy actors is the key
- Informal relationship is important
- Involvement of municipal authorities is important
- Use of vernacular language in writing and deliberations

